



SCO Forum –

Aug. 7, 2006

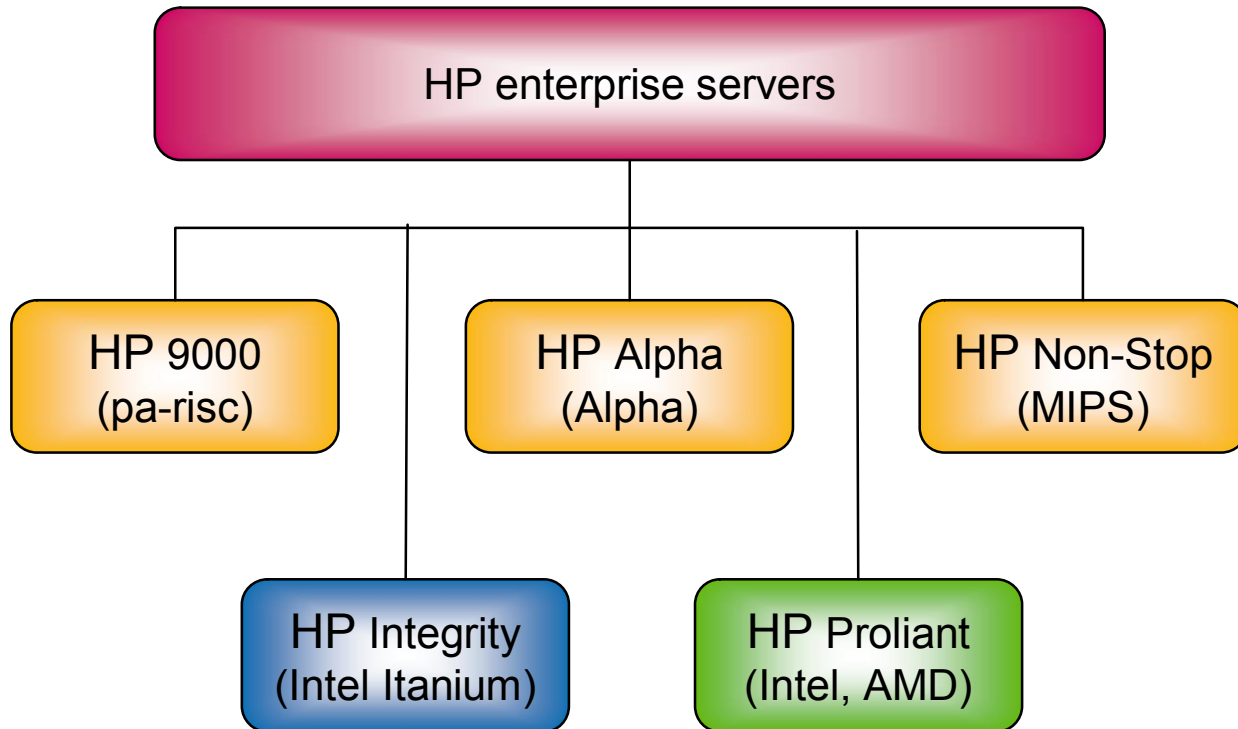
Walt Keyser



Agenda

- Portfolio
- Transition to serial technology
- SmartStart & SIM
- Product support

Family tree



HP positioned to deliver more

- Seamless 32/64-bit choice, innovation, and value
- Driving the future of standards across OS, application and platform
- Delivering the best choice of price: performance

Leading adaptive management

End-to-end, common storage integration

Proven enterprise solutions & partners

Unmatched 32/64-bit expertise, service and support

ProLiant

Leading x86 price:performance and value

1-4P
Windows, Linux, NetWare, SCO

NonStop

Bulletproof data integrity and instant data processing

Fault Tolerant
NSK

Integrity

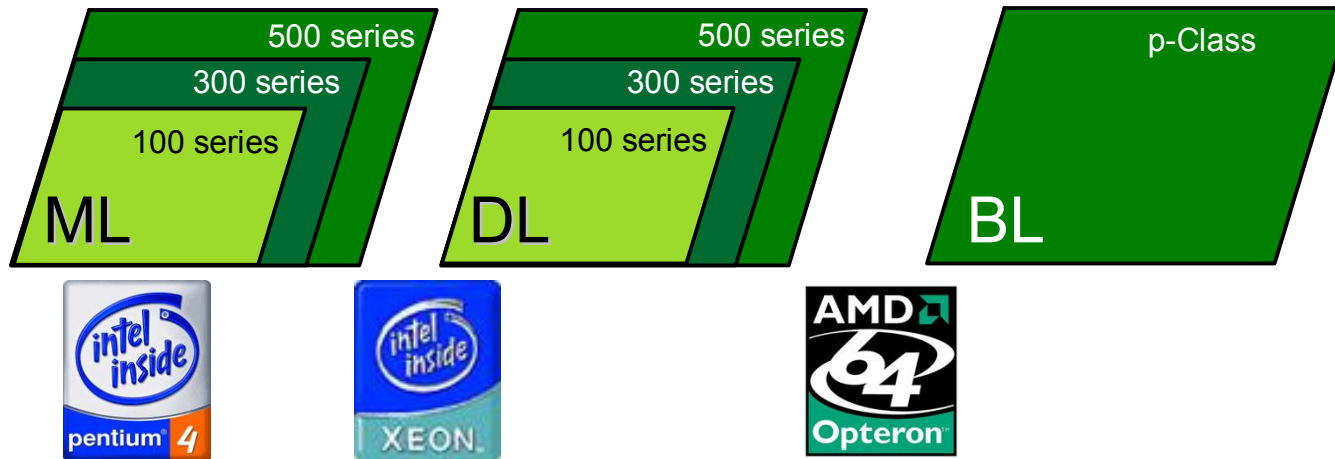
Ultimate scalable performance and reliability

1-128P
HP-UX, Windows, Linux, OpenVMS

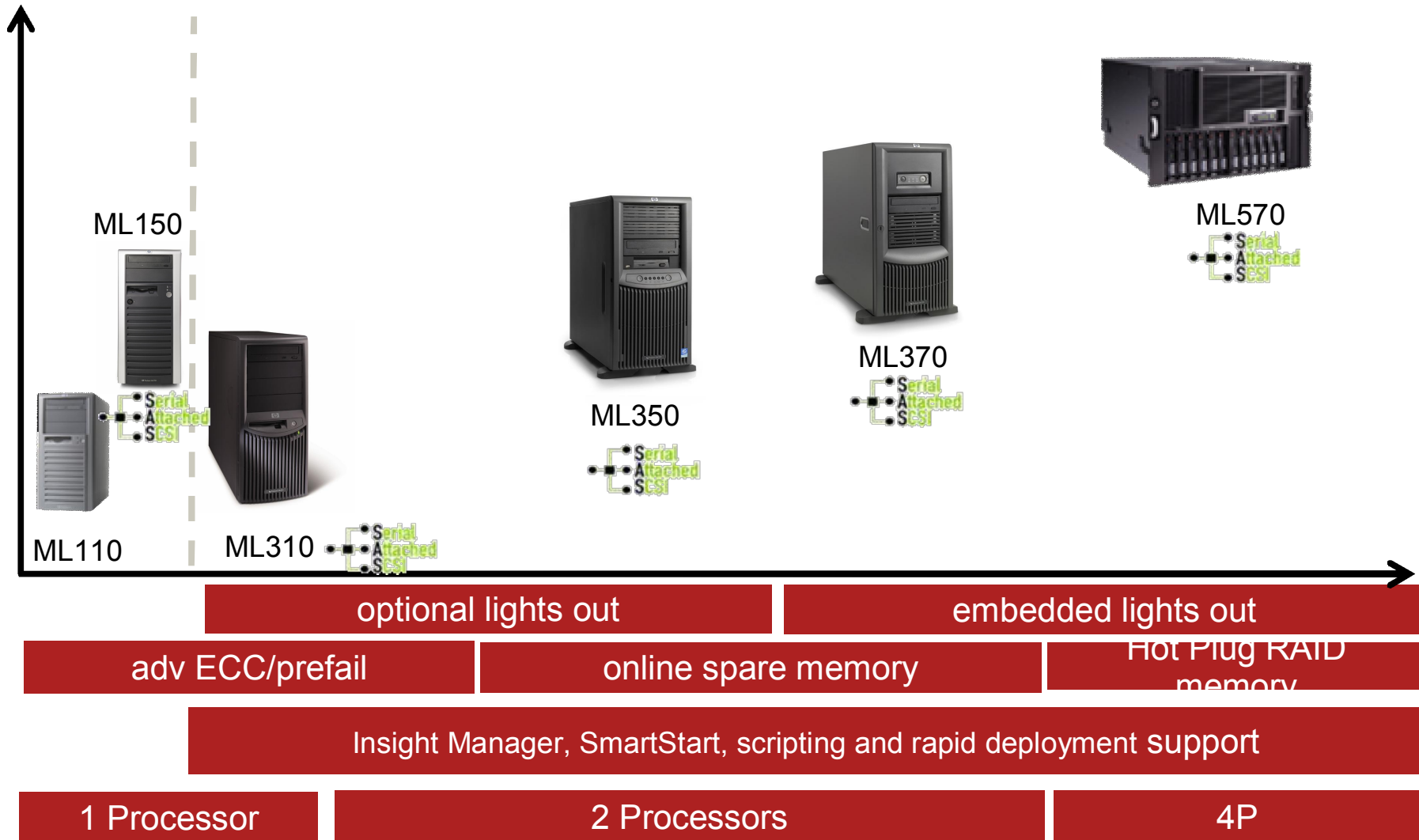
ISS portfolio

ProLiant Essentials Foundation/Value Packs

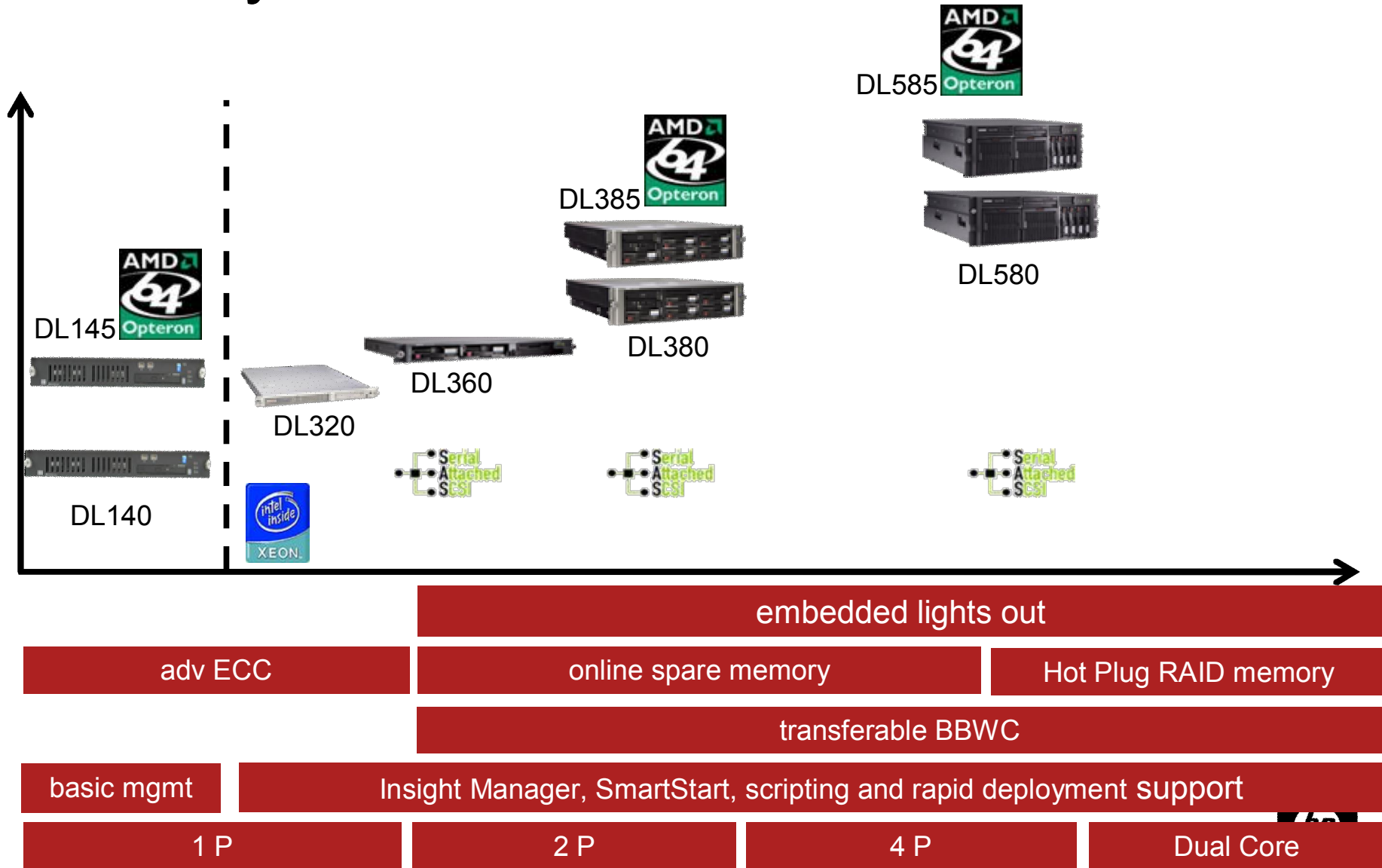
Smart Array Storage for ProLiant servers



Maximum line



Density line



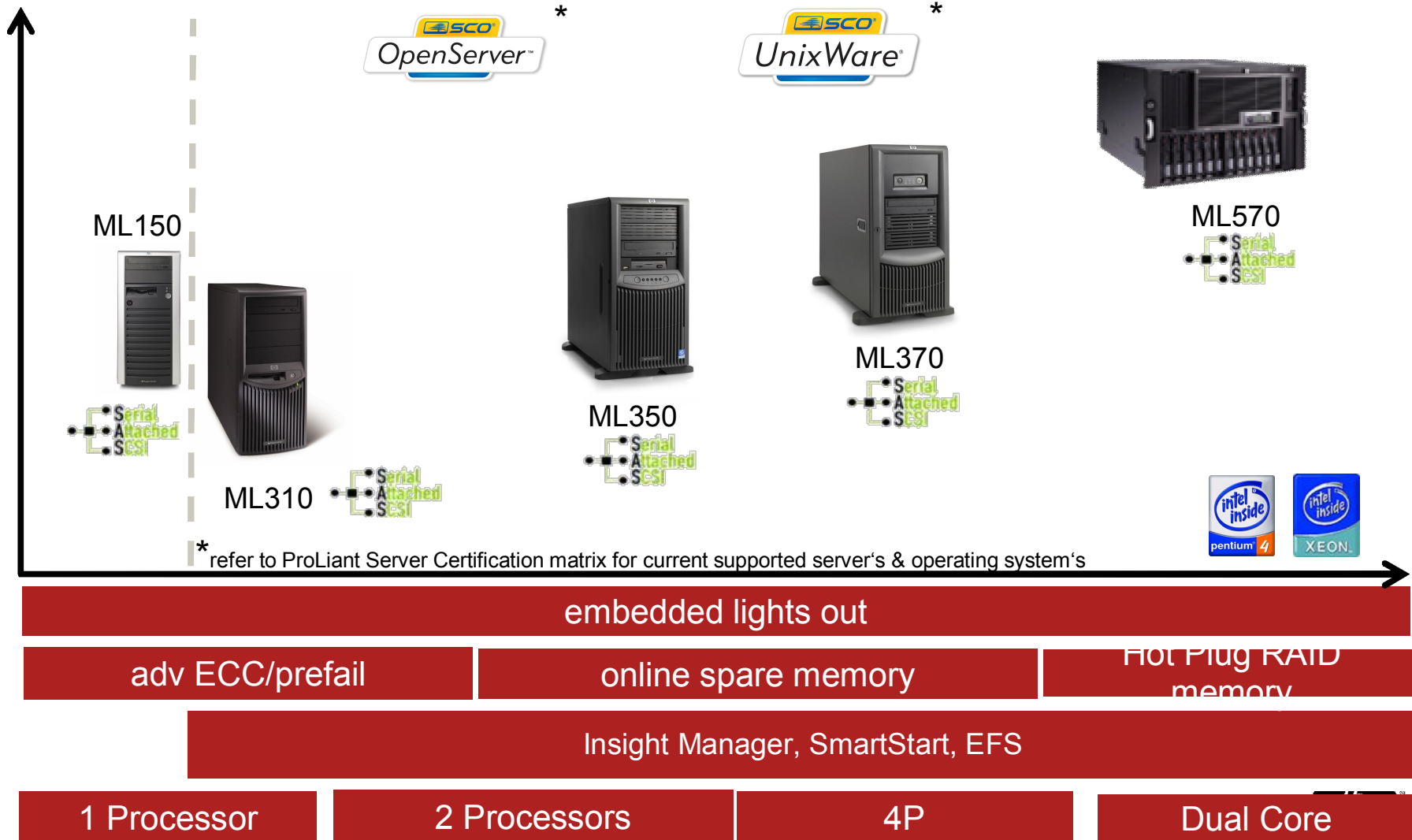
ISS SCO portfolio

ProLiant Extended Feature Supplement

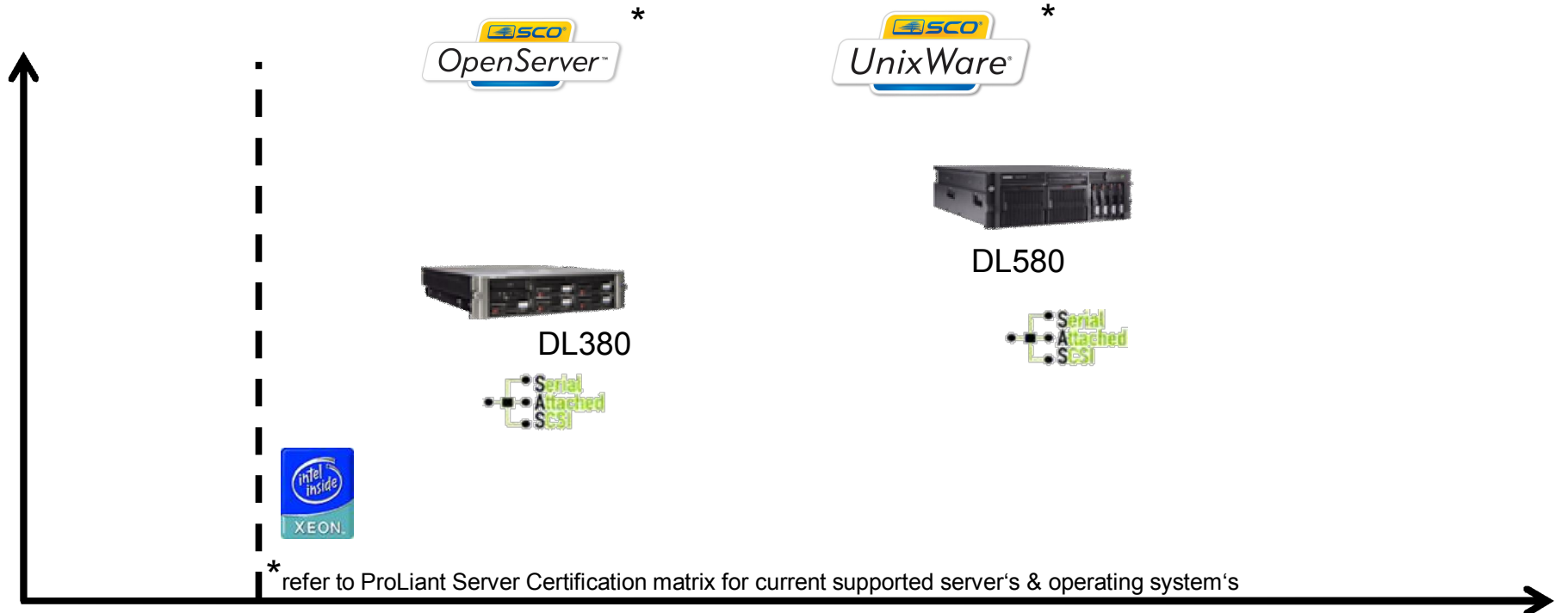
Smart Array Storage for ProLiant servers



Maximum line SCO portfolio



Density line SCO portfolio



embedded lights out

adv ECC

online spare memory

Hot Plug RAID memory

transferable BBWC

Insight Manager, SmartStart, EFS

1 P

2 P

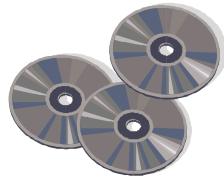
4 P

Dual Core

Work together



Integrated Lights-out

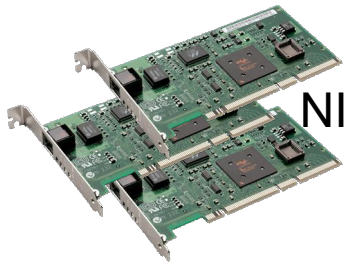


Extended Feature Supplement

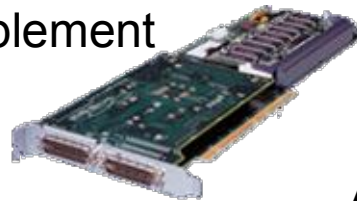


Storage Array

MSA1500 shown with an MSA20 & MSA30 enclosure



NIC Teaming



RAID Arrays

Advanced Memory Protection



Integrated RAID 5i/6i



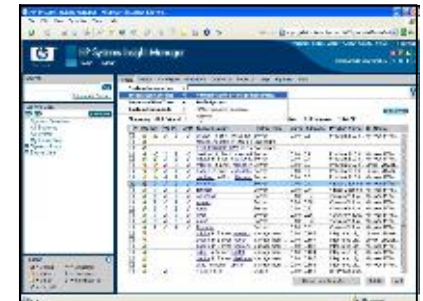
Rack



Pre-failure Warranty



Hot Plug Components



HP SIM



Transition to serial technology

Investment protection

- Small Form Factor (SFF) SAS is the new universal drive

Higher reliability

- 1.7 million MTBF (vs. 1.5 million for 3.5" SCSI)

Flexible configurations

- Mix and match SAS and SATA drives
- More drives than with SCSI

Better performance

- Serial point-to-point connections
- More spindles per platform

Greater efficiency / improved thermals

- Thirty % the power consumption of 3.5" drives
- Smaller form factor enables better airflow



Serial technology enables choice



- SAS disk drives can be used for mission critical and performance-oriented applications
- SATA drives can be used for disk enhanced backup or non-mission critical reference data

HDD support

Servers	SCSI	SATA		SAS	
	3.5"	LFF(3.5")	SFF(2.5")	LFF(3.5")	SFF(2.5")
DL380 G5			✓		✓
DL580 G4			✓		✓
ML150 G3		✓		✓	
ML310 G3	✓	✓		✓	
ML350 G5		✓	✓	✓	✓
ML370 G5			✓		✓
ML570 G4			✓		✓
Storage	SCSI	SATA		SAS	
	3.5"	LFF(3.5")	SFF(2.5")	LFF(3.5")	SFF(2.5")
MSA20		✓			
MSA30	✓				
MSA50			✓		✓
MSA500 G2	✓				
MSA1000	✓				
MSA1500cs	✓	✓			

SmartStart & SIM

- Free with every ProLiant Server (except 100-series)

HP Systems Insight Manager interface showing a table of system status for SCO Unix. The table includes columns for System Name, System Address, Product Name, OS Name, System Type, VM, VPM, PF, and MP. The system 'dl380g4' is listed with System Address 172.25.47.125, Product Name ProLiant DL380 G4, OS Name SCO_SV, and System Type Server.

System Name	System Address	Product Name	OS Name	System Type	VM	VPM	PF	MP
dl380g4	172.25.47.125	ProLiant DL380 G4	SCO_SV	Server				

HP Systems Insight Manager interface showing the System Page for dl380g4. The page displays system status, identification, product description, and contact information.

System Status
Health Status: ●

Identification

Address	172.25.47.125
Preferred System Name	dl380g4
Network Name	172.25.47.125
UUID	0B657269747900000DCA7444000000063
Serial Number	0001NJG149

Product Description

Product ID	122657-00A
System Type	Server
System Subtype	HP ProLiant
Product Model	ProLiant DL380 G4
Hardware Description	SCO OpenServer Release 6
OS Name	SCO_SV
OS For Tool Filtering	MgmtProc
OS Description	Host Name: illhorn
OS Version	Release: 5v6.0.0
Management Protocols	HTTP:, SNMP:1.0, SSH:SSH-1.99-OpenSSH_4.2

Contact Information

Location	CCA10269
Contact	KiranP

Product support information



What's the buzz ?

HP.com - SCO Unix support for HP ProLiant Servers - Microsoft Internet Explorer provided by Compaq Computer Corporation

Address: http://h10018.www1.hp.com/wwsolutions/sco/index-all.html

ProLiant Server Certification

SCO Unix

SCO Unix on ProLiant - Supported versions

If the server or version of SCO Unix is not located on this matrix, please refer to the 'archive' tab below.

- » View HP ProLiant Options
- » View the HP ProLiant Driver Support Matrix

HP supported
 SCO certified - provides a link to software and driver downloads

Servers | » DL servers | » ML servers | » Archive

ProLiant DL series	OpenServer		UnixWare	
	5.0.7	6	7.1.3	7.1.4
DL380 G5 (1)	<input checked="" type="checkbox"/>	<input checked="" type="checkbox"/>	<input checked="" type="checkbox"/>	<input checked="" type="checkbox"/>
DL580 G4 (1)		<input checked="" type="checkbox"/>		<input checked="" type="checkbox"/>

ProLiant ML series	OpenServer		UnixWare	
	5.0.7	6	7.1.3	7.1.4
ML150 G3		<input checked="" type="checkbox"/> (2)		<input checked="" type="checkbox"/>
ML310 G3	<input checked="" type="checkbox"/>	<input checked="" type="checkbox"/>		
ML350 G5 (1)	<input checked="" type="checkbox"/>	<input checked="" type="checkbox"/>	<input checked="" type="checkbox"/>	<input checked="" type="checkbox"/>
ML370 G5 (1)	<input checked="" type="checkbox"/>	<input checked="" type="checkbox"/>	<input checked="" type="checkbox"/>	<input checked="" type="checkbox"/>
ML570 G4 (1)	<input checked="" type="checkbox"/>	<input checked="" type="checkbox"/>	<input checked="" type="checkbox"/>	<input checked="" type="checkbox"/>

5.0.7 = SCO OpenServer 5.0.7
 6.0.0 = SCO OpenServer 6
 7.1.3 = SCO UnixWare 7.1.3
 7.1.4 = SCO UnixWare 7.1.4

» New Products!
June 26, 2006

Trusted sites

What's the buzz ?

HP.com - HP ProLiant SCO Option Matrix - Microsoft Internet Explorer provided by Compaq Computer Corporation

Address: http://h10016.www1.hp.com/wwsolutions/sco/options-matrix-all.html

HP ProLiant SCO Option Matrix
All options

Click on the product to obtain product information, downloads, certification, and documentation.

HP supported
 Pending support

All options	» Array	» HBA	» Network	» MSA
Array controllers	Open Server	6.0.0	7.1.3	7.1.4
Serial controllers				
Smart Array P600	✓	✓	✓	✓
Smart Array P400	✓	✓	✓	✓
Smart Array E200	✓	✓	✓	✓
Parallel SCSI controllers				
Smart Array 8404	✓	✓	✓	✓
Smart Array 8402	✓	✓	✓	✓
Smart Array 842	✓	✓	✓	✓
Smart Array 841	✓	✓	✓	✓
Smart Array 8i	✓	✓	✓	✓
ProLiant Host Bus Adapters	Open Server	6.0.0	7.1.3	7.1.4
SAS HBA				
HP 8 Internal Port SAS HBA with RAID	✓	✓	✓	✓
SCSI HBA				
Single Channel U320 SCSI HBA	✓	✓	✓	✓
Dual Channel U320 SCSI HBA	✓	✓	✓	✓
U3 SCSI AIR OS HBA	✓	✓	✓	✓
PXI fibre channel adapters				
FCA2214 2Gb	✓	✓	✓	✓
FCA2214DC 2Gb	✓	✓	✓	✓
HP ProLiant Networking	Open Server	6.0.0	7.1.3	7.1.4
Gigabit Ethernet adapters				
NC150T	✓	✓	✓	✓
NC320T	✓	✓	✓	✓
NC310E	✓	✓	✓	✓
NC340T	✓	✓	✓	✓
NC1020	✓	✓	✓	✓
NC8170	✓	✓	✓	✓
NC8770	✓	✓	✓	✓
NC7170	✓	✓	✓	✓
NC7771	✓	✓	✓	✓
Modular Smart	Open Server			Unix Ware

Done Trusted sites

What's the buzz ?

HP ProLiant Driver Support Matrix for SCO					
Controller Family	Driver Name	Version	Notes	Servers Supported (default controller)	Options
SCO OpenServer 5.0.7					
U3 SCSI Alt OS HBA	Adaptec Ultra 160 Family driver - ad160	d1.41.s3	Available in BTLD diskette and SCO OpenServer EFS image		l
Single channel U320 SCSI HBA Dual Channel U320 SCSI HBA	LSI Logic Fusion-MPT host adapter driver - lsil	1.03.28	Available in BTLD diskette and SCO OpenServer EFS image	5, 6, 8, 10	j, k
HP ProLiant Smart Array 6x Controllers [†]	hp ProLiant Command Interface Storage Subsystem Driver - ciss	5.72a	Available in BTLD diskette and SCO OpenServer EFS image	1, 6	d, e, f, g, h
HP ProLiant Smart Array P600/P400/E200/E200i Controllers ^{††}	hp ProLiant Serial Attached SCSI Driver - hpsas	5.72a	Available in BTLD diskette and SCO OpenServer EFS image	1, 2, 6, 7, 8, 9, 10, 11	a, b, c
SCO UnixWare 7.1.3, 7.1.4/OpenServer 6					
U3 SCSI Alt OS HBA	Adaptec Ultra160 Device Driver for 713/714 - adst70	d3.151	Available in HBA diskette of SCO UnixWare EFS		l
Single channel U320 SCSI HBA Dual Channel U320 SCSI HBA	LSI Logic IHV HBA Driver - mpt	1.04.10	Available in HBA diskette of SCO UnixWare EFS	5, 6, 8, 10	j, k
HP 8 Internal Port SAS HBA with RAID	LSI Logic IHV HBA Driver - mpt	1.04.10	Available in HBA diskette of SCO UnixWare EFS		i
HP ProLiant Smart Array 6x Controllers [†]	hp ProLiant Command Interface Storage Subsystem Driver - ciss	7.72a	Available in HBA diskette of SCO UnixWare EFS	1, 3, 6	d, e, f, g, h
HP ProLiant Smart Array P600/P400/E200/E200i Controllers ^{††}	hp ProLiant Serial Attached SCSI Driver - hpsas	7.72a	Available in HBA diskette of SCO UnixWare EFS	1, 2, 3, 4, 6, 7, 8, 9, 10, 11	a, b, c
HP Storageworks FC221x FC HBA	QLogic QLC2300 Fibre Channel IHV HBA Drive - qlc2300	8.0.2 & above	Not available as part of EFS or HBA. Download the latest from http://www.sco.com/support/download.html		m, n
ProLiant Server		Unit Number		Options	
DL380 G4*		1		Smart Array P600	a
DL380 G5		2		Smart Array P400	b
DL580 G3*		3		Smart Array E200/E200i	c
DL580 G4		4		Smart Array 6404	d
ML310 G3		5		Smart Array 6402	e
ML350 G4P*		6		Smart Array 642	f
ML350 G5		7		Smart Array 641	g
ML370 G4*		8		Smart Array 6i	h
ML370 G5		9		HP 8 Internal Port SAS HBA with RAID	i
ML570 G3*		10		Single channel U320 SCSI HBA	j
ML570 G4		11		Dual Channel U320 SCSI HBA	k
				U3 SCSI Alt OS HBA	l
				FCA2214 2Gb	m
				FCA2214DC 2Gb	n
(†) - Parallel SCSI based Array Controllers					
(††) - Serial attached SCSI (SAS) based Array Controllers					
(*) - Also available with Serial Attached SCSI (SAS) option.					

Summary

- SCO availability, Intel Architecture on ProLiant ML & DL servers
- EFS x.72 support latest SAS HBAs & MSA 20 Storage Array
- Systems Insight Manger (SIM) support for SCO Unix (OSR 6 / UW 7)
- Web-site & certifications (helpful links)
 - <http://www.hp.com/>
 - http://www.hp.com/sbso/busproducts_servers.html
 - <http://h10018.www1.hp.com/wwsolutions/sco/index-all.html>
 - http://wdb1.sco.com/chwp/owa/hch_vendor_search?corp_id=71

Q & A





i n v e n t